

# CERTIFICATE OF LOCATION OF GOVERNMENT CORNER

NORTHEAST Corner of Section 22, Township 107, Range 39, 5TH P.M.

STATE OF MINNESOTA, County of MURRAY

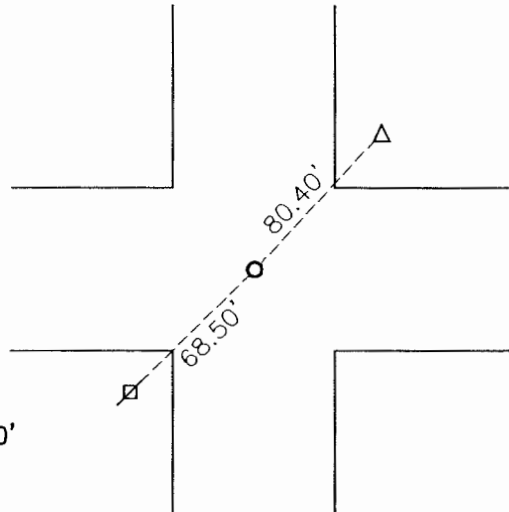
At the corner location shown on the sketch:

On 11-21-2005 found a SPIKE SET BY COUNTY  
DATE

left monument as found,  lowered monument,  removed monument (explain)

On 11-21-2005 placed a 1" PIPE WITH SEAL #43844  
DATE

### SKETCH OF REFERENCE TIES



Top center of pedestal NE 80.40'  
Nail and seal in power pole SW 68.50'

Minnesota State Plane Coordinate  
System Murray County Datum  
NAD83 (1996)

N: 179383.832  
E: 569418.611

Statement of evidence relative to this corner location is on back of page.

I hereby certify that this document and the data contained herein was prepared by me or under my direct supervision.

*Paul Burt* 12/13/05  
SIGNATURE DATE

Registration No. 43844

Land Surveyor,  Professional Engineer  
 County Surveyor,  County Engineer

OFFICE OF THE COUNTY RECORDER

County of \_\_\_\_\_

I hereby certify that this document was filed in the Co. Recorders office at \_\_\_\_\_ .M on the \_\_\_\_\_ day of JAN 26 2006 A.D. 20 \_\_\_\_\_

County Recorder *James V. Johnson*  
By \_\_\_\_\_, Deputy

DOCUMENT NO. \_\_\_\_\_

## Statement of Evidence

Original survey was done by Louis Brockman in August 1861. A pit and mound was placed at corner.

The Murray County Highway Department did a total grading project on the road in 1963. The corner was assumed.

On November 21, 2005 Bueltel-Moseng dug and found a spike placed by the county. We tied out the spike and dug with a backhoe, nothing else was found. We replaced the spike with a 1" pipe with seal #43844.